

Texas Prior Authorization Program  
Clinical Criteria

---

## Drug/Drug Class

### Orilissa (Elagolix)

#### Clinical Criteria Information included in this Document

- [Drugs requiring prior authorization:](#) the list of drugs requiring prior authorization for this clinical criteria
- [Prior authorization criteria logic:](#) a description of how the prior authorization request will be evaluated against the clinical criteria rules
- [Logic diagram:](#) a visual depiction of the clinical criteria logic
- [Supporting tables:](#) a collection of information associated with the steps within the criteria (diagnosis codes, procedure codes, and therapy codes); provided when applicable
- [References:](#) clinical publications and sources relevant to this clinical criteria

**Note:** Click the hyperlink to navigate directly to that section.

## Revision Notes

Added GCN for ibuprofen (35740) to the supporting tables section

**Orilissa (Elagolix)****Drugs Requiring Prior Authorization**

The listed GCNs may not be an indication of Texas Medicaid Formulary coverage. To learn the current formulary coverage, visit [txvendordrug.com/searches/formulary-drug-search](https://txvendordrug.com/searches/formulary-drug-search).

Drugs Requiring Prior Authorization	
Label Name	GCN
ORILISSA 150 MG TABLET	45026
ORILISSA 200 MG TABLET	45028

**Orilissa (Elagolix)**  
**Clinical Criteria Logic**

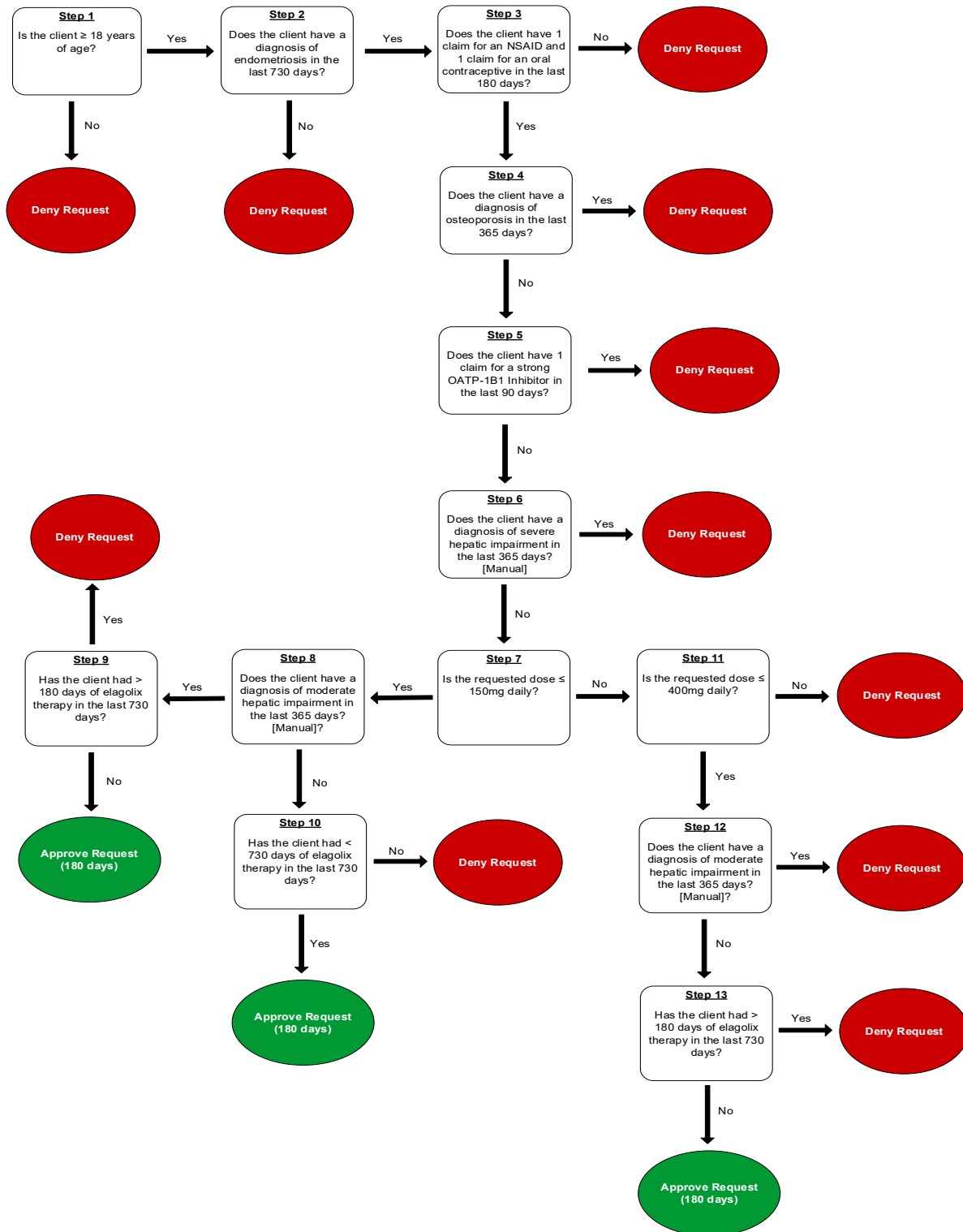
1. Is the client greater than or equal to ( $\geq$ ) 18 years of age?  
☐ Yes – Go to #2  
☐ No – Deny
2. Does the client have a [diagnosis of endometriosis](#) in the last 730 days?  
☐ Yes – Go to #3  
☐ No – Deny
3. Does the client have 1 claim for a [NSAID](#) and 1 claim for an [oral contraceptive](#) in the last 180 days?  
☐ Yes – Go to #4  
☐ No – Deny
4. Does the client have a [diagnosis of osteoporosis](#) in the last 365 days?  
☐ Yes – Deny  
☐ No – Go to #5
5. Does the client have 1 claim for a [strong OATP-1B1 inhibitor](#) in the last 90 days?  
☐ Yes – Deny  
☐ No – Go to #6
6. Does the client have a diagnosis of severe hepatic impairment (Child-Pugh class C) in the last 365 days? [Manual]  
☐ Yes – Deny  
☐ No – Go to #7
7. Is the requested dose less than or equal to ( $\leq$ ) 150 mg daily?  
☐ Yes – Go to #8  
☐ No – Go to #11
8. Does the client have a diagnosis of moderate hepatic impairment (Child-Pugh class B) in the last 365 days? [Manual]  
☐ Yes – Go to #9  
☐ No – Go to #10
9. Has the client had more than ( $>$ ) 180 days of elagolix therapy in the last 730 days?  
☐ Yes – Deny

- ☐ No – Approve (180 days)
10. Has the client had less than (<) 730 days of elagolix therapy in the last 730 days?
- ☐ Yes – Approve (180 days)
- ☐ No – Deny
11. Is the requested dose less than or equal to ( $\leq$ ) 400 mg daily (dosed as 200 mg twice daily)?
- ☐ Yes – Go to #12
- ☐ No – Deny
12. Does the client have a diagnosis of moderate hepatic impairment (Child-Pugh class B) in the last 365 days? [Manual]
- ☐ Yes – Deny
- ☐ No – Go to #13
13. Has the client had more than (>) 180 days of elagolix therapy in the last 730 days?
- ☐ Yes – Deny
- ☐ No – Approve (180 days)



## Orilissa (Elagolix)

### Clinical Criteria Logic Diagram





## Orilissa (Elagolix)

## Clinical Criteria Supporting Tables

<b>Table 2 (diagnosis of endometriosis)</b> <b>Required diagnosis: 1</b> <b>Look back timeframe: 730 days</b>	
<b>ICD-10 Code</b>	<b>Description</b>
N800	ENDOMETRIOSIS OF UTERUS
N801	ENDOMETRIOSIS OF OVARY
N802	ENDOMETRIOSIS OF FALLOPIAN TUBE
N803	ENDOMETRIOSIS OF PELVIC PERITONEUM
N804	ENDOMETRIOSIS OF RECTOVAGINAL SEPTUM AND VAGINA
N805	ENDOMETRIOSIS OF INTESTINE
N806	ENDOMETRIOSIS IN CUTANEOUS SCAR
N808	OTHER ENDOMETRIOSIS
N809	ENDOMETRIOSIS, UNSPECIFIED

<b>Table 3a (claim for an NSAID)</b> <b>Required claims: 1</b> <b>Look back timeframe: 180 days</b>	
<b>GCN</b>	<b>Label Name</b>
47131	ANAPROX DS 550 MG TABLET
47130	ANAPROX 275 MG TABLET
62729	ARTHROTEC 50 MG-200 MCG TAB
06263	ARTHROTEC 75 MG-200 MCG TAB
01750	DAYPRO 600MG CAPLET
13960	DICLOFENAC POT 50 MG TABLET

<b>Table 3a (claim for an NSAID)</b> <b>Required claims: 1</b> <b>Look back timeframe: 180 days</b>	
<b>GCN</b>	<b>Label Name</b>
35850	DICLOFENAC SOD EC 25 MG TAB
35851	DICLOFENAC SOD EC 50 MG TAB
35852	DICLOFENAC SOD EC 75 MG TAB
13310	DICLOFENAC SOD ER 100 MG TAB
62729	DICLOFENAC-MISOPROST 50-200 TB
6263	DICLOFENAC-MISOPROST 75-0.2 TB
16850	DIFLUNISAL 250 MG TABLET
16851	DIFLUNISAL 500MG TABLET
16850	DOLOBID 250 MG TABLET
57589	DOLOBID 375 MG TABLET
16851	DOLOBID 500 MG TABLET
30547	DUEXIS 800-26.6MG TABLET
33870	ETODOLAC 200 MG CAPSULE
33871	ETODOLAC 300 MG CAPSULE
61761	ETODOLAC 400 MG TABLET
61766	ETODOLAC 500 MG TABLET
61765	ETODOLAC ER 400 MG TABLET
61767	ETODOLAC ER 500 MG TABLET
61762	ETODOLAC ER 600 MG TABLET
35820	FELDENE 10MG CAPSULE
35821	FELDENE 20MG CAPSULE
35760	FENOPROFEN 600MG TABLET
27999	FENOPROFEN CALCIUM 400 MG CAP

<b>Table 3a (claim for an NSAID)</b> <b>Required claims: 1</b> <b>Look back timeframe: 180 days</b>	
<b>GCN</b>	<b>Label Name</b>
35751	FENOPROFEN 300 MG CAPSULE
35750	FENOPROFEN 200 MG CAPSULE
35711	FLURBIPROFEN 100MG TABLET
35710	FLURBIPROFEN 50MG TABLET
99371	HYDROCODONE-IBUPROFEN 10-200MG TABLET
22678	HYDROCODONE-IBUPROFEN 5-200MG TABLET
63101	HYDROCODONE-IBUPROFEN 7.5-200MG TABLET
99371	IBUDONE 10-200 MG TABLET
22678	IBUDONE 5-200MG TABLET
35743	IBUPROFEN 200 MG TABLET
35740	IBUPROFEN 300 MG TABLET
35741	IBUPROFEN 400 MG TABLET
35742	IBUPROFEN 600 MG TABLET
35744	IBUPROFEN 800 MG TABLET
35680	INDOCIN 25 MG CAPSULE
35681	INDOCIN 50 MG CAPSULE
35690	INDOCIN SR 75MG CAPSULE SA
20240	INDOCIN 50 MG SUPPOSITORY
35680	INDOMETHACIN 25MG CAPSULE
35681	INDOMETHACIN 50MG CAPSULE
35690	INDOMETHACIN ER 75MG CAPSULE
34422	KETOPROFEN 25 MG CAPSULE
34420	KETOPROFEN 50MG CAPSULE



<b>Table 3a (claim for an NSAID)</b> <b>Required claims: 1</b> <b>Look back timeframe: 180 days</b>	
<b>GCN</b>	<b>Label Name</b>
34421	KETOPROFEN 75MG CAPSULE
33792	KETOPROFEN ER 200MG CAPSULE
32531	KETOROLAC 10MG TABLET
35238	KETOROLAC 15MG/ML VIAL
35239	KETOROLAC 30MG/ML VIAL
35236	KETOROLAC 60MG/2ML VIAL
33870	LODINE 200 MG CAPSULE
33871	LODINE 300 MG CAPSULE
61765	LODINE XL 400 MG TABLET SA
61762	LODINE XL 600 MG TABLET SA
61767	LODINE XL 500 MG TABLET
61766	LODINE 500 MG TABLET
61761	LODINE 400MG TABLET
35810	MECLOFENAMATE 100 MG CAPSULE
35811	MECLOFENAMATE 50 MG CAPSULE
16530	MEFENAMIC ACID 250MG CAPSULE
32961	NABUMETONE 500MG TABLET
32962	NABUMETONE 750MG TABLET
35750	NALFON 200 MG PULVULE
35751	NALFON 300 MG CAPSULE
35760	NALFON 600 MG CAPSULE
27999	NALFON 400MG CAPSULE
35793	NAPROSYN 500 MG TABLET

<b>Table 3a (claim for an NSAID)</b> <b>Required claims: 1</b> <b>Look back timeframe: 180 days</b>	
<b>GCN</b>	<b>Label Name</b>
35790	NAPROSYN 250MG TABLET
35792	NAPROSYN 375MG TABLET
61850	NAPROSYN EC 375 MG TABLET
61851	NAPROSYN EC 500MG TABLET
35790	NAPROXEN 250 MG TABLET
35792	NAPROXEN 375 MG TABLET
35793	NAPROXEN 500 MG TABLET
61850	NAPROXEN DR 375 MG TABLET
61851	NAPROXEN DR 500 MG TABLET
47132	NAPROXEN SOD 220 MG TABLET
92253	NAPROXEN SOD ER 500 MG TABLET
47130	NAPROXEN SODIUM 275 MG TAB
47131	NAPROXEN SODIUM 550 MG TAB
01750	OXAPROZIN 600MG TABLET
23827	OXYCODONE-IBUPROFEN 5-400MG TABLET
35820	PIROXICAM 10MG CAPSULE
35821	PIROXICAM 20MG CAPSULE
16530	PONSTEL 250MG KAPSEALS
35431	QC IBUPROFEN 200 MG SOFTGEL
35743	QC IBUPROFEN 200 MG CAPLET
29928	SPRIX 15.75MG NASAL SPRAY
35800	SULINDAC 150MG TABLET
35801	SULINDAC 200MG TABLET

<b>Table 3a (claim for an NSAID)</b> <b>Required claims: 1</b> <b>Look back timeframe: 180 days</b>	
<b>GCN</b>	<b>Label Name</b>
99597	SUMATRIPTAN-NAPROXEN 85-500 MG
35780	TOLMETIN SODIUM 200MG TABLET
35770	TOLMETIN SODIUM 400MG CAPSULE
35781	TOLMETIN SODIUM 600MG TABLET
99597	TREXIMET 85-500 MG TABLET
42354	TREXIMET 10-60 MG TABLET
28572	VIMOVO DR 375-20 MG TABLET
28570	VIMOVO DR 500-20 MG TABLET
13310	VOLTAREN-XR 100 MG TABLET SA
35499	ZORVOLEX 18MG CAPSULE
35503	ZORVOLEX 35MG CAPSULE

<b>Table 3b (claim for an oral contraceptive)</b> <b>Required claims: 1</b> <b>Look back timeframe: 180 days</b>	
<b>GCN</b>	<b>Label Name</b>
11534	AFIRMELLE-28 TABLET
11530	ALTAVERA-28 TABLET
11474	ALYACEN 1-35 28 TABLET
11477	ALYACEN 7-7-7-28 TABLET
27096	AMETHIA 0.15-0.03-0.01 MG TABLET
98551	AMETHYST 90-20 MCG TABLET
68811	APRI 28 DAY TABLET

<b>Table 3b (claim for an oral contraceptive)</b> <b>Required claims: 1</b> <b>Look back timeframe: 180 days</b>	
<b>GCN</b>	<b>Label Name</b>
11478	ARANELLE 28 TABLET
27096	ASHLYNA 0.15-0.03-0.01 MG TAB
11534	AUBRA-28 TABLET
11534	AVIANE-28 TABLET
11481	AUROVELA 1 MG-20 MCG TABLET
11480	AUROVELA 21 1.5-30 TABLET
26629	AUROVELA 24 FE 1 MG-20 MCG TAB
68102	AUROVELA FE 1-20 TABLET
68101	AUROVELA FE 1.5 MG-30 MCG TAB
11534	AVIANE-28 TABLET
11530	AYUNA-28 TABLET
94868	AZURETTE 28 DAY TABLET
44336	BALCOLTRA TABLET
11470	BALZIVA 28 TABLET
29095	BEYAZ 28 TABLET
26629	BLISOVI 24 FE TABLET
68101	BLISOVI FE 1.5-30 TABLET
68102	BLISOVI FE 1-20 TABLET
11470	BRIELLYN TABLET
11520	CAMILA 0.35 MG TABLET
27096	CAMRESE 0.15-0.03-0.01 MG TAB
18167	CAMRESE LO TABLET
34725	CHARLOTTE 24 FE CHEWABLE TAB

<b>Table 3b (claim for an oral contraceptive)</b> <b>Required claims: 1</b> <b>Look back timeframe: 180 days</b>	
<b>GCN</b>	<b>Label Name</b>
11530	CHATEAL-28 TABLET
11500	CRYSELLE-28 TABLET
68811	CYRED EQ 28 DAY TABLET
11474	DASETTA 1-35-28 TABLET
11477	DASETTA 7/7/7-28 TABLET
27096	DAYSEE 0.15-0.03-0.01 MG TAB
11520	DEBLITANE 0.35 MG TABLET
68811	DESOGESTREL-EE 0.15-0.03 MG TB
94868	DESOGESTR-ETH ESTRAD ETH ESTRA
98551	DOLISHALE 90-20 MCG TABLET
29095	DROSP-EE-LEVOMEF 3-0.02-0.451
29382	DROSP-EE-LEVOMEF 3-0.03-0.451
26737	DROSPIRENONE-EE 3-0.02 MG TAB
13083	DROSPIRENONE-EE 3-0.03 MG TAB
11500	ELINEST-28 TABLET
11531	ENPRESSE-28 TABLET
11520	ERRIN 0.35 MG TABLET
11300	ESTARYLLA 0.25-0.035 MG TABLET
11490	ETHYNODIOL-ETH ESTRA 1 MG-35 MCG
11491	ETHYNODIOL-ETH ESTRA 1 MG-50 MCG
11534	FALMINA-28 TABLET
34576	GEMMILY 1 MG-20 MCG CAPSULE
34725	FINZALA 1.0-0.02 (24)-75 CHEW

<b>Table 3b (claim for an oral contraceptive)</b> <b>Required claims: 1</b> <b>Look back timeframe: 180 days</b>	
<b>GCN</b>	<b>Label Name</b>
68102	HAILEY FE 1-20 TABLET
68101	HAILEY FE 1.5-30 TABLET
11480	HAILEY 21 1.5 MG-30 MCG TAB
26629	HAILEY 24 FE 1 MG-20 MCG TAB
11520	HEATHER 0.35 MG TABLET
20414	ICLEVIA 0.15 MG-0.03 MG TABLET
11520	INCASSIA 0.35 MG TABLET
68811	ISIBLOOM 28 DAY TABLET
27096	JAIMIESS 0.15-0.03-0.01 MG TAB
18167	JAIMIESS 0.1-0.02-0.01 MG TAB
26737	JASMIEL 3 MG-0.02 MG TABLET
11520	JENCYCLA 0.35 MG TABLET
20414	JOLESSA 0.15-0.03 MG TABLET
44336	JOYEAUX-28 TABLET
68811	JULEBER 28 DAY TABLET
11481	JUNEL 1 MG-20 MCG TABLET
11480	JUNEL 1.5 MG-30 MCG TABLET
68102	JUNEL FE 1 MG-20 MCG TABLET
68101	JUNEL FE 1.5 MG-30 MCG TABLET
26629	JUNEL FE 24 TABLET
29719	KAITLIB FE CHEWABLE TABLET
94868	KARIVA 28 DAY TABLET
11490	KELNOR 1-35 28 TABLET

<b>Table 3b (claim for an oral contraceptive)</b> <b>Required claims: 1</b> <b>Look back timeframe: 180 days</b>	
<b>GCN</b>	<b>Label Name</b>
11491	KELNOR 1-50 TABLET
11530	KURVELO TABLET
11480	LARIN 1.5 MG-30 MCG TABLET
11481	LARIN 21 1-20 TABLET
26629	LARIN 24 FE 1 MG-20 MCG TABLET
68101	LARIN FE 1.5-30 TABLET
68102	LARIN FE 1-20 TABLET
29719	LAYOLIS FE CHEWABLE TABLET
11478	LEENA 28 TABLET
11534	LESSINA-28 TABLET
11531	LEVONEST-28 TABLET
27096	LEVONO-E ESTRAD 0.15-0.03-0.01
11534	LEVONOR-ETH ESTRAD 0.1-0.02 MG
18167	LEVONO-E ESTRAD 0.10-0.002-0.01
98551	LEVONOR-ETH ESTRA 0.09-0.02 MG
11530	LEVONOR-ETH ESTRAD 0.15-0.03
20414	LEVONOR-ETH ESTRAD 0.15-0.03
34465	LEVONORG 0.15MG-EE 20-25-30MCG
45933	LEVORA-21 TABLET
11530	LEVORA-28 TABLET
29264	LO LOESTRIN FE 1-10 TABLET
11480	LOESTRIN 21 1.5-30 TABLET
11481	LOESTRIN 21 1-20 TABLET

<b>Table 3b (claim for an oral contraceptive)</b> <b>Required claims: 1</b> <b>Look back timeframe: 180 days</b>	
<b>GCN</b>	<b>Label Name</b>
68101	LOESTRIN FE 1.5-30 TABLET
68102	LOESTRIN FE 1-20 TABLET
26629	LOESTRIN 24 FE TABLET
18167	LOJAIMIESS 0.1-0.02-0.01 TAB
26737	LORYNA 3 MG-0.02 MG TABLET
18167	LOSEASONIQUE TABLET
11500	LOW-OGESTREL-28 TABLET
45902	LOW-OGESTREL-21 TABLET
26737	LO-ZUMANDIMINE 3 MG-0.02 MG TAB
11534	LUTERA-28 TABLET
11520	LYLEQ 0.35 MG TABLET
11520	LYZA 0.35 MG TABLET
11530	MARLISSA-28 TABLET
34725	MERZEE 1 MG-20 MCG CAPSULE
34576	MERZEE 1 MG-20 MCG CAPSULE
11480	MICROGESTIN 21 1.5-30 TABLET
11481	MICROGESTIN 21 1-20 MG
26629	MICROGESTIN 24 FE 1 MG-20 MCG
68101	MICROGESTIN FE 1.5-30 TAB
68102	MICROGESTIN FE 1-20 TABLET
11300	MILI 0.25-0.035 MG TABLET
34725	MINASTRIN 24 FE CHEWABLE TABLET
11300	MONO-LINYAH 28 TABLET



<b>Table 3b (claim for an oral contraceptive)</b> <b>Required claims: 1</b> <b>Look back timeframe: 180 days</b>	
<b>GCN</b>	<b>Label Name</b>
23497	NATAZIA 28 TABLET
11471	NECON 0.5-35-28 TABLET
11474	NECON 1-35-28 TABLET
11461	NECON 1-50-28 TABLET
45898	NECON 0.5/35-21 TABLET
11477	NECON 7-7-7-28 TABLET
11520	NORA-BE TABLET
11280	NORETHINDRONE 5 MG TABLET
11520	NORETHINDRONE 0.35 MG TABLET
68105	NORETH-EE-FE 1MG/20-30-35 MCG
11480	NORETHIN-EE 1.5-0.03 MG (21) TAB
97167	NORET-ESTR-FE 0.4-0.035-75
68101	NORETH-EE-FE 1.5-0.03 MG (21)-75
34576	NORETH-EE-FE 1-0.02 (24)-75 CAP
68102	NORETH-ESTRAD-FE 1-0.02-75
34725	NORETH-ESTRAD-FE 1-0.02-75
11481	NORETHIND-ETH ESTRAD 1-0.02 MG
29719	NORETHIN-ESTRA-FE 0.8-0.025 MG
11301	NORG-EE 0.18-0.215-0.25/0.035
11300	NORG-ETHIN-ESTRA 0.25-0.035 MG
11471	NORTREL 0.5-35-28 TABLET
11474	NORTREL 1-35 TABLET
11477	NORTREL 7-7-7-28 TABLET

<b>Table 3b (claim for an oral contraceptive)</b> <b>Required claims: 1</b> <b>Look back timeframe: 180 days</b>	
<b>GCN</b>	<b>Label Name</b>
11474	NYLIA 1-35 28 TABLET
11477	NYLIA 7-7-7-28 TABLET
11300	NYMYO 0.25-0.035 MG (28) TAB
13083	OCELLA 3 MG-0.03 MG TABLET
11470	PHILITH 0.4-0.035 MG TABLET
94868	PIMTREA 28 DAY TABLET
11530	PORTIA-28 TABLET
34465	QUARTETTE TABLET
68811	RECLIPSEN 28 DAY TABLET
34465	RIVELSA TABLET
29382	SAFYRAL TABLET
60937	SEASONIQUE 0.15-0.03-0.01 TAB
27096	SEASONIQUE 0.15-0.03-0.01 TAB
20414	SETLAKIN 0.15-0.03 MG TABLET
11520	SHAROBEL 0.35 MG TABLET
94868	SIMLIYA 28 DAY TABLET
27096	SIMPESSE 0.15-0.03-0.01 MG TAB
46373	SLYND 4 MG TABLET
11300	SPRINTEC 28 DAY DABLET
11534	SRONYX 0.10-0.02 MG TABLET
13083	SYEDA 28 TABLET
68102	TARINA FE 1-20 TABLET
26629	TARINA 24 FE 1 MG-20 MCG TAB

<b>Table 3b (claim for an oral contraceptive)</b> <b>Required claims: 1</b> <b>Look back timeframe: 180 days</b>	
<b>GCN</b>	<b>Label Name</b>
34576	TAYSOFY 1 MG-20 MCG CAPSULE
34576	TAYTULLA 1 MG-20 MCG CAPSULE
68105	TILIA FE 28 TABLET
11301	TRI-ESTARYLLA TABLET
68105	TRI-LEGEST FE-28 DAY TABLET
11301	TRI-LINYAH TABLET
18126	TRI-LO-ESTARYLLA
18126	TRI-LO-MARZIA TABLET
18126	TRI-LO-SPRINTEC TABLET
18126	TRI-LO-MILI TABLET
11301	TRI-MILI 28 TABLET
45929	TRI-NORINYL 21 TABLET
11478	TRI-NORINYL 28 TABLET
11301	TRI-NYMYO 28 TABLET
11301	TRI-SPRINTEC TABLET
11301	TRI-VYLIBRA 28 TABLET
18126	TRI-VYLIBRA LO TABLET
11531	TRIVORA-28 TABLET
11500	TURQOZ-28 TABLET
29382	TYDEMY TABLET
13094	VELIVET 28 DAY TABLET
26737	VESTURA 3 MG-0.02 MG TABLET
11534	VIENVA-28 TABLET

<b>Table 3b (claim for an oral contraceptive)</b> <b>Required claims: 1</b> <b>Look back timeframe: 180 days</b>	
<b>GCN</b>	<b>Label Name</b>
94868	VIORELE 28 DAY TABLET
94868	VOLNEA 0.15-0.02-0.01 MG TAB
11300	VYLIBRA 28 TABLET
11471	WERA 0.5/0.035 MG 28 TABLET
13083	YASMIN 28 TABLET
26737	YAZ 28 TABLET
11490	ZOVIA 1-35E TABLET
13083	ZUMANDIMINE 3 MG-0.03 MG TAB

<b>Table 4 (diagnosis of osteoporosis)</b> <b>Required diagnosis: 1</b> <b>Look back timeframe: 365 days</b>	
<b>ICD-10 Code</b>	<b>Description</b>
M8000XA	AGE-RELATED OSTEOPOROSIS WITH CURRENT PATHOLOGICAL FRACTURE, UNSPECIFIED SITE INITIAL ENCOUNTER FOR FRACTURE
M8000XD	AGE-RELATED OSTEOPOROSIS WITH CURRENT PATHOLOGICAL FRACTURE, UNSPECIFIED SITE SUBSEQUENT ENCOUNTER FOR FRACTURE WITH ROUTINE HEALING
M8000XG	AGE-RELATED OSTEOPOROSIS WITH CURRENT PATHOLOGICAL FRACTURE, UNSPECIFIED SITE
M8000XK	AGE-RELATED OSTEOPOROSIS WITH CURRENT PATHOLOGICAL FRACTURE, UNSPECIFIED SITE
M8000XP	AGE-RELATED OSTEOPOROSIS WITH CURRENT PATHOLOGICAL FRACTURE, UNSPECIFIED SITE
M8000XS	AGE-RELATED OSTEOPOROSIS WITH CURRENT PATHOLOGICAL FRACTURE, UNSPECIFIED SITE
M8011A	AGE-RELATED OSTEOPOROSIS WITH CURRENT PATHOLOGICAL FRACTURE, RIGHT SHOULDER INITIAL ENCOUNTER FOR FRACTURE

<b>Table 4 (diagnosis of osteoporosis)</b> <b>Required diagnosis: 1</b> <b>Look back timeframe: 365 days</b>	
<b>ICD-10 Code</b>	<b>Description</b>
M8011D	AGE-RELATED OSTEOPOROSIS WITH CURRENT PATHOLOGICAL FRACTURE, RIGHT SHOULDER SUBSEQUENT ENCOUNTER FOR FRACTURE WITH ROUTINE HEALING
M8011G	AGE-RELATED OSTEOPOROSIS WITH CURRENT PATHOLOGICAL FRACTURE, RIGHT SHOULDER SUBSEQUENT ENCOUNTER FOR FRACTURE WITH DELAYED HEALING
M8011K	AGE-RELATED OSTEOPOROSIS WITH CURRENT PATHOLOGICAL FRACTURE, RIGHT SHOULDER SUBSEQUENT ENCOUNTER FOR FRACTURE WITH NONUNION
M8011P	AGE-RELATED OSTEOPOROSIS WITH CURRENT PATHOLOGICAL FRACTURE, RIGHT SHOULDER SUBSEQUENT ENCOUNTER FOR FRACTURE WITH MALUNION
M8011S	AGE-RELATED OSTEOPOROSIS WITH CURRENT PATHOLOGICAL FRACTURE, RIGHT SHOULDER SEQUELA
M80012A	AGE-RELATED OSTEOPOROSIS WITH CURRENT PATHOLOGICAL FRACTURE, LEFT SHOULDER INITIAL ENCOUNTER FOR FRACTURE
M80012D	AGE-RELATED OSTEOPOROSIS WITH CURRENT PATHOLOGICAL FRACTURE, LEFT SHOULDER SUBSEQUENT ENCOUNTER FOR FRACTURE WITH ROUTINE HEALING
M80012G	AGE-RELATED OSTEOPOROSIS WITH CURRENT PATHOLOGICAL FRACTURE, LEFT SHOULDER SUBSEQUENT ENCOUNTER FOR FRACTURE WITH DELAYED HEALING
M80012K	AGE-RELATED OSTEOPOROSIS WITH CURRENT PATHOLOGICAL FRACTURE, LEFT SHOULDER SUBSEQUENT ENCOUNTER FOR FRACTURE WITH NONUNION
M80012P	AGE-RELATED OSTEOPOROSIS WITH CURRENT PATHOLOGICAL FRACTURE, LEFT SHOULDER SUBSEQUENT ENCOUNTER FOR FRACTURE WITH MALUNION
M80012S	AGE-RELATED OSTEOPOROSIS WITH CURRENT PATHOLOGICAL FRACTURE, LEFT SHOULDER SEQUELA
M80019A	AGE-RELATED OSTEOPOROSIS WITH CURRENT PATHOLOGICAL FRACTURE, UNSPECIFIED SHOULDER INITIAL ENCOUNTER FOR FRACTURE

<b>Table 4 (diagnosis of osteoporosis)</b> <b>Required diagnosis: 1</b> <b>Look back timeframe: 365 days</b>	
<b>ICD-10 Code</b>	<b>Description</b>
M80019D	AGE-RELATED OSTEOPOROSIS WITH CURRENT PATHOLOGICAL FRACTURE, UNSPECIFIED SHOULDER SUBSEQUENT ENCOUNTER FOR FRACTURE WITH ROUTINE HEALING
M80019G	AGE-RELATED OSTEOPOROSIS WITH CURRENT PATHOLOGICAL FRACTURE, UNSPECIFIED SHOULDER SUBSEQUENT ENCOUNTER FOR FRACTURE WITH DELAYED HEALING
M80019K	AGE-RELATED OSTEOPOROSIS WITH CURRENT PATHOLOGICAL FRACTURE, UNSPECIFIED SHOULDER SUBSEQUENT ENCOUNTER FOR FRACTURE WITH NONUNION
M80019P	AGE-RELATED OSTEOPOROSIS WITH CURRENT PATHOLOGICAL FRACTURE, UNSPECIFIED SHOULDER SUBSEQUENT ENCOUNTER FOR FRACTURE WITH MALUNION
M80019S	AGE-RELATED OSTEOPOROSIS WITH CURRENT PATHOLOGICAL FRACTURE, UNSPECIFIED SHOULDER SEQUELA
M80021A	AGE-RELATED OSTEOPOROSIS WITH CURRENT PATHOLOGICAL FRACTURE, RIGHT HUMERUS INITIAL ENCOUNTER FOR FRACTURE
M80021D	AGE-RELATED OSTEOPOROSIS WITH CURRENT PATHOLOGICAL FRACTURE, RIGHT HUMERUS SUBSEQUENT ENCOUNTER FOR FRACTURE WITH ROUTINE HEALING
M80021G	AGE-RELATED OSTEOPOROSIS WITH CURRENT PATHOLOGICAL FRACTURE, RIGHT HUMERUS SUBSEQUENT ENCOUNTER FOR FRACTURE WITH DELAYED HEALING
M80021K	AGE-RELATED OSTEOPOROSIS WITH CURRENT PATHOLOGICAL FRACTURE, RIGHT HUMERUS SUBSEQUENT ENCOUNTER FOR FRACTURE WITH NONUNION
M80021P	AGE-RELATED OSTEOPOROSIS WITH CURRENT PATHOLOGICAL FRACTURE, RIGHT HUMERUS SUBSEQUENT ENCOUNTER FOR FRACTURE WITH MALUNION
M80021S	AGE-RELATED OSTEOPOROSIS WITH CURRENT PATHOLOGICAL FRACTURE, RIGHT HUMERUS SEQUELA
M80022A	AGE-RELATED OSTEOPOROSIS WITH CURRENT PATHOLOGICAL FRACTURE, LEFT HUMERUS INITIAL ENCOUNTER FOR FRACTURE

<b>Table 4 (diagnosis of osteoporosis)</b> <b>Required diagnosis: 1</b> <b>Look back timeframe: 365 days</b>	
<b>ICD-10 Code</b>	<b>Description</b>
M80021D	AGE-RELATED OSTEOPOROSIS WITH CURRENT PATHOLOGICAL FRACTURE, LEFT HUMERUS SUBSEQUENT ENCOUNTER FOR FRACTURE WITH ROUTINE HEALING
M80022G	AGE-RELATED OSTEOPOROSIS WITH CURRENT PATHOLOGICAL FRACTURE, LEFT HUMERUS SUBSEQUENT ENCOUNTER FOR FRACTURE WITH DELAYED HEALING
M80022K	AGE-RELATED OSTEOPOROSIS WITH CURRENT PATHOLOGICAL FRACTURE, LEFT HUMERUS SUBSEQUENT ENCOUNTER FOR FRACTURE WITH NONUNION
M80022P	AGE-RELATED OSTEOPOROSIS WITH CURRENT PATHOLOGICAL FRACTURE, LEFT HUMERUS SUBSEQUENT ENCOUNTER FOR FRACTURE WITH MALUNION
M80022S	AGE-RELATED OSTEOPOROSIS WITH CURRENT PATHOLOGICAL FRACTURE, LEFT HUMERUS SEQUELA
M80029A	AGE-RELATED OSTEOPOROSIS WITH CURRENT PATHOLOGICAL FRACTURE, UNSPECIFIED HUMERUS INITIAL ENCOUNTER FOR FRACTURE
M80029D	AGE-RELATED OSTEOPOROSIS WITH CURRENT PATHOLOGICAL FRACTURE, UNSPECIFIED HUMERUS SUBSEQUENT ENCOUNTER FOR FRACTURE WITH ROUTINE HEALING
M80029G	AGE-RELATED OSTEOPOROSIS WITH CURRENT PATHOLOGICAL FRACTURE, UNSPECIFIED HUMERUS SUBSEQUENT ENCOUNTER FOR FRACTURE WITH DELAYED HEALING
M80029K	AGE-RELATED OSTEOPOROSIS WITH CURRENT PATHOLOGICAL FRACTURE, UNSPECIFIED HUMERUS SUBSEQUENT ENCOUNTER FOR FRACTURE WITH NONUNION
M80029P	AGE-RELATED OSTEOPOROSIS WITH CURRENT PATHOLOGICAL FRACTURE, UNSPECIFIED HUMERUS SUBSEQUENT ENCOUNTER FOR FRACTURE WITH MALUNION
M80029S	AGE-RELATED OSTEOPOROSIS WITH CURRENT PATHOLOGICAL FRACTURE, UNSPECIFIED HUMERUS SEQUELA
M80031A	AGE-RELATED OSTEOPOROSIS WITH CURRENT PATHOLOGICAL FRACTURE, RIGHT FOREARM INITIAL ENCOUNTER FOR FRACTURE

<b>Table 4 (diagnosis of osteoporosis)</b> <b>Required diagnosis: 1</b> <b>Look back timeframe: 365 days</b>	
<b>ICD-10 Code</b>	<b>Description</b>
M80031D	AGE-RELATED OSTEOPOROSIS WITH CURRENT PATHOLOGICAL FRACTURE, RIGHT FOREARM SUBSEQUENT ENCOUNTER FOR FRACTURE WITH ROUTINE HEALING
M80031G	AGE-RELATED OSTEOPOROSIS WITH CURRENT PATHOLOGICAL FRACTURE, RIGHT FOREARM SUBSEQUENT ENCOUNTER FOR FRACTURE WITH DELAYED HEALING
M80031K	AGE-RELATED OSTEOPOROSIS WITH CURRENT PATHOLOGICAL FRACTURE, RIGHT FOREARM SUBSEQUENT ENCOUNTER FOR FRACTURE WITH NONUNION
M80031P	AGE-RELATED OSTEOPOROSIS WITH CURRENT PATHOLOGICAL FRACTURE, RIGHT FOREARM SUBSEQUENT ENCOUNTER FOR FRACTURE WITH MALUNION
M80031S	AGE-RELATED OSTEOPOROSIS WITH CURRENT PATHOLOGICAL FRACTURE, RIGHT FOREARM SEQUELA
M80032A	AGE-RELATED OSTEOPOROSIS WITH CURRENT PATHOLOGICAL FRACTURE, LEFT FOREARM INITIAL ENCOUNTER FOR FRACTURE
M80032D	AGE-RELATED OSTEOPOROSIS WITH CURRENT PATHOLOGICAL FRACTURE, LEFT FOREARM SUBSEQUENT ENCOUNTER FOR FRACTURE WITH ROUTINE HEALING
M80032G	AGE-RELATED OSTEOPOROSIS WITH CURRENT PATHOLOGICAL FRACTURE, LEFT FOREARM SUBSEQUENT ENCOUNTER FOR FRACTURE WITH DELAYED HEALING
M80032K	AGE-RELATED OSTEOPOROSIS WITH CURRENT PATHOLOGICAL FRACTURE, LEFT FOREARM SUBSEQUENT ENCOUNTER FOR FRACTURE WITH NONUNION
M80032P	AGE-RELATED OSTEOPOROSIS WITH CURRENT PATHOLOGICAL FRACTURE, LEFT FOREARM SUBSEQUENT ENCOUNTER FOR FRACTURE WITH MALUNION
M80032S	AGE-RELATED OSTEOPOROSIS WITH CURRENT PATHOLOGICAL FRACTURE, LEFT FOREARM SEQUELA
M80039A	AGE-RELATED OSTEOPOROSIS WITH CURRENT PATHOLOGICAL FRACTURE, UNSPECIFIED FOREARM INITIAL ENCOUNTER FOR FRACTURE



<b>Table 4 (diagnosis of osteoporosis)</b> <b>Required diagnosis: 1</b> <b>Look back timeframe: 365 days</b>	
<b>ICD-10 Code</b>	<b>Description</b>
M80039D	AGE-RELATED OSTEOPOROSIS WITH CURRENT PATHOLOGICAL FRACTURE, UNSPECIFIED FOREARM SUBSEQUENT ENCOUNTER FOR FRACTURE WITH ROUTINE HEALING
M80039G	AGE-RELATED OSTEOPOROSIS WITH CURRENT PATHOLOGICAL FRACTURE, UNSPECIFIED FOREARM SUBSEQUENT ENCOUNTER FOR FRACTURE WITH DELAYED HEALING
M80039K	AGE-RELATED OSTEOPOROSIS WITH CURRENT PATHOLOGICAL FRACTURE, UNSPECIFIED FOREARM SUBSEQUENT ENCOUNTER FOR FRACTURE WITH NONUNION
M80039P	AGE-RELATED OSTEOPOROSIS WITH CURRENT PATHOLOGICAL FRACTURE, UNSPECIFIED FOREARM SUBSEQUENT ENCOUNTER FOR FRACTURE WITH MALUNION
M80039S	AGE-RELATED OSTEOPOROSIS WITH CURRENT PATHOLOGICAL FRACTURE, UNSPECIFIED FOREARM SEQUELA
M80041A	AGE-RELATED OSTEOPOROSIS WITH CURRENT PATHOLOGICAL FRACTURE, RIGHT HAND INITIAL ENCOUNTER FOR FRACTURE
M80041D	AGE-RELATED OSTEOPOROSIS WITH CURRENT PATHOLOGICAL FRACTURE, RIGHT HAND SUBSEQUENT ENCOUNTER FOR FRACTURE WITH ROUTINE HEALING
M80041G	AGE-RELATED OSTEOPOROSIS WITH CURRENT PATHOLOGICAL FRACTURE, RIGHT HAND SUBSEQUENT ENCOUNTER FOR FRACTURE WITH DELAYED HEALING
M80041K	AGE-RELATED OSTEOPOROSIS WITH CURRENT PATHOLOGICAL FRACTURE, RIGHT HAND SUBSEQUENT ENCOUNTER FOR FRACTURE WITH NONUNION
M80041P	AGE-RELATED OSTEOPOROSIS WITH CURRENT PATHOLOGICAL FRACTURE, RIGHT HAND SUBSEQUENT ENCOUNTER FOR FRACTURE WITH MALUNION
M80041S	AGE-RELATED OSTEOPOROSIS WITH CURRENT PATHOLOGICAL FRACTURE, RIGHT HAND SEQUELA
M80042A	AGE-RELATED OSTEOPOROSIS WITH CURRENT PATHOLOGICAL FRACTURE, LEFT HAND INITIAL ENCOUNTER FOR FRACTURE
M80042D	AGE-RELATED OSTEOPOROSIS WITH CURRENT PATHOLOGICAL FRACTURE, LEFT HAND SUBSEQUENT ENCOUNTER FOR FRACTURE WITH ROUTINE HEALING

<b>Table 4 (diagnosis of osteoporosis)</b> <b>Required diagnosis: 1</b> <b>Look back timeframe: 365 days</b>	
<b>ICD-10 Code</b>	<b>Description</b>
M80042G	AGE-RELATED OSTEOPOROSIS WITH CURRENT PATHOLOGICAL FRACTURE, LEFT HAND SUBSEQUENT ENCOUNTER FOR FRACTURE WITH DELAYED HEALING
M80042K	AGE-RELATED OSTEOPOROSIS WITH CURRENT PATHOLOGICAL FRACTURE, LEFT HAND SUBSEQUENT ENCOUNTER FOR FRACTURE WITH NONUNION
M80042P	AGE-RELATED OSTEOPOROSIS WITH CURRENT PATHOLOGICAL FRACTURE, LEFT HAND SUBSEQUENT ENCOUNTER FOR FRACTURE WITH MALUNION
M80042S	AGE-RELATED OSTEOPOROSIS WITH CURRENT PATHOLOGICAL FRACTURE, LEFT HAND SEQUELA
M80049A	AGE-RELATED OSTEOPOROSIS WITH CURRENT PATHOLOGICAL FRACTURE, UNSPECIFIED HAND INITIAL ENCOUNTER FOR FRACTURE
M80049D	AGE-RELATED OSTEOPOROSIS WITH CURRENT PATHOLOGICAL FRACTURE, UNSPECIFIED HAND SUBSEQUENT ENCOUNTER FOR FRACTURE WITH ROUTINE HEALING
M80049G	AGE-RELATED OSTEOPOROSIS WITH CURRENT PATHOLOGICAL FRACTURE, UNSPECIFIED HAND SUBSEQUENT ENCOUNTER FOR FRACTURE WITH DELAYED HEALING
M80049K	AGE-RELATED OSTEOPOROSIS WITH CURRENT PATHOLOGICAL FRACTURE, UNSPECIFIED HAND SUBSEQUENT ENCOUNTER FOR FRACTURE WITH NONUNION
M80049P	AGE-RELATED OSTEOPOROSIS WITH CURRENT PATHOLOGICAL FRACTURE, UNSPECIFIED HAND SUBSEQUENT ENCOUNTER FOR FRACTURE WITH MALUNION
M80049S	AGE-RELATED OSTEOPOROSIS WITH CURRENT PATHOLOGICAL FRACTURE, UNSPECIFIED HAND SEQUELA
M80051A	AGE-RELATED OSTEOPOROSIS WITH CURRENT PATHOLOGICAL FRACTURE, RIGHT FEMUR INITIAL ENCOUNTER FOR FRACTURE
M80051D	AGE-RELATED OSTEOPOROSIS WITH CURRENT PATHOLOGICAL FRACTURE, RIGHT FEMUR SUBSEQUENT ENCOUNTER FOR FRACTURE WITH ROUTINE HEALING
M80051G	AGE-RELATED OSTEOPOROSIS WITH CURRENT PATHOLOGICAL FRACTURE, RIGHT FEMUR SUBSEQUENT ENCOUNTER FOR FRACTURE WITH DELAYED HEALING

<b>Table 4 (diagnosis of osteoporosis)</b> <b>Required diagnosis: 1</b> <b>Look back timeframe: 365 days</b>	
<b>ICD-10 Code</b>	<b>Description</b>
M80051K	AGE-RELATED OSTEOPOROSIS WITH CURRENT PATHOLOGICAL FRACTURE, RIGHT FEMUR SUBSEQUENT ENCOUNTER FOR FRACTURE WITH NONUNION
M80051P	AGE-RELATED OSTEOPOROSIS WITH CURRENT PATHOLOGICAL FRACTURE, RIGHT FEMUR SUBSEQUENT ENCOUNTER FOR FRACTURE WITH MALUNION
M80051S	AGE-RELATED OSTEOPOROSIS WITH CURRENT PATHOLOGICAL FRACTURE, RIGHT FEMUR SEQUELA
M80052A	AGE-RELATED OSTEOPOROSIS WITH CURRENT PATHOLOGICAL FRACTURE, LEFT FEMUR INITIAL ENCOUNTER FOR FRACTURE
M80052D	AGE-RELATED OSTEOPOROSIS WITH CURRENT PATHOLOGICAL FRACTURE, LEFT FEMUR SUBSEQUENT ENCOUNTER FOR FRACTURE WITH ROUTINE HEALING
M80052G	AGE-RELATED OSTEOPOROSIS WITH CURRENT PATHOLOGICAL FRACTURE, LEFT FEMUR SUBSEQUENT ENCOUNTER FOR FRACTURE WITH DELAYED HEALING
M80052K	AGE-RELATED OSTEOPOROSIS WITH CURRENT PATHOLOGICAL FRACTURE, LEFT FEMUR SUBSEQUENT ENCOUNTER FOR FRACTURE WITH NONUNION
M80052P	AGE-RELATED OSTEOPOROSIS WITH CURRENT PATHOLOGICAL FRACTURE, LEFT FEMUR SUBSEQUENT ENCOUNTER FOR FRACTURE WITH MALUNION
M80052S	AGE-RELATED OSTEOPOROSIS WITH CURRENT PATHOLOGICAL FRACTURE, LEFT FEMUR SEQUELA
M80059A	AGE-RELATED OSTEOPOROSIS WITH CURRENT PATHOLOGICAL FRACTURE, UNSPECIFIED FEMUR INITIAL ENCOUNTER FOR FRACTURE
M80059D	AGE-RELATED OSTEOPOROSIS WITH CURRENT PATHOLOGICAL FRACTURE, UNSPECIFIED FEMUR SUBSEQUENT ENCOUNTER FOR FRACTURE WITH ROUTINE HEALING
M80059G	AGE-RELATED OSTEOPOROSIS WITH CURRENT PATHOLOGICAL FRACTURE, UNSPECIFIED FEMUR SUBSEQUENT ENCOUNTER FOR FRACTURE WITH DELAYED HEALING
M80059K	AGE-RELATED OSTEOPOROSIS WITH CURRENT PATHOLOGICAL FRACTURE, UNSPECIFIED FEMUR SUBSEQUENT ENCOUNTER FOR FRACTURE WITH NONUNION

<b>Table 4 (diagnosis of osteoporosis)</b> <b>Required diagnosis: 1</b> <b>Look back timeframe: 365 days</b>	
<b>ICD-10 Code</b>	<b>Description</b>
M80059P	AGE-RELATED OSTEOPOROSIS WITH CURRENT PATHOLOGICAL FRACTURE, UNSPECIFIED FEMUR SUBSEQUENT ENCOUNTER FOR FRACTURE WITH MALUNION
M80059S	AGE-RELATED OSTEOPOROSIS WITH CURRENT PATHOLOGICAL FRACTURE, UNSPECIFIED FEMUR SEQUELA
M80061A	AGE-RELATED OSTEOPOROSIS WITH CURRENT PATHOLOGICAL FRACTURE, RIGHT LOWER LEG INITIAL ENCOUNTER FOR FRACTURE
M80061D	AGE-RELATED OSTEOPOROSIS WITH CURRENT PATHOLOGICAL FRACTURE, RIGHT LOWER LEG SUBSEQUENT ENCOUNTER FOR FRACTURE WITH ROUTINE HEALING
M80061G	AGE-RELATED OSTEOPOROSIS WITH CURRENT PATHOLOGICAL FRACTURE, RIGHT LOWER LEG SUBSEQUENT ENCOUNTER FOR FRACTURE WITH DELAYED HEALING
M80061K	AGE-RELATED OSTEOPOROSIS WITH CURRENT PATHOLOGICAL FRACTURE, RIGHT LOWER LEG SUBSEQUENT ENCOUNTER FOR FRACTURE WITH NONUNION
M80061P	AGE-RELATED OSTEOPOROSIS WITH CURRENT PATHOLOGICAL FRACTURE, RIGHT LOWER LEG SUBSEQUENT ENCOUNTER FOR FRACTURE WITH MALUNION
M80061S	AGE-RELATED OSTEOPOROSIS WITH CURRENT PATHOLOGICAL FRACTURE, RIGHT LOWER LEG SEQUELA
M80062A	AGE-RELATED OSTEOPOROSIS WITH CURRENT PATHOLOGICAL FRACTURE, LEFT LOWER LEG INITIAL ENCOUNTER FOR FRACTURE
M80062D	AGE-RELATED OSTEOPOROSIS WITH CURRENT PATHOLOGICAL FRACTURE, LEFT LOWER LEG SUBSEQUENT ENCOUNTER FOR FRACTURE WITH ROUTINE HEALING
M80062G	AGE-RELATED OSTEOPOROSIS WITH CURRENT PATHOLOGICAL FRACTURE, LEFT LOWER LEG SUBSEQUENT ENCOUNTER FOR FRACTURE WITH DELAYED HEALING
M80062K	AGE-RELATED OSTEOPOROSIS WITH CURRENT PATHOLOGICAL FRACTURE, LEFT LOWER LEG SUBSEQUENT ENCOUNTER FOR FRACTURE WITH NONUNION

<b>Table 4 (diagnosis of osteoporosis)</b> <b>Required diagnosis: 1</b> <b>Look back timeframe: 365 days</b>	
<b>ICD-10 Code</b>	<b>Description</b>
M80062P	AGE-RELATED OSTEOPOROSIS WITH CURRENT PATHOLOGICAL FRACTURE, LEFT LOWER LEG SUBSEQUENT ENCOUNTER FOR FRACTURE WITH MALUNION
M80062S	AGE-RELATED OSTEOPOROSIS WITH CURRENT PATHOLOGICAL FRACTURE, LEFT LOWER LEG SEQUELA
M80069A	AGE-RELATED OSTEOPOROSIS WITH CURRENT PATHOLOGICAL FRACTURE, UNSPECIFIED LOWER LEG INITIAL ENCOUNTER FOR FRACTURE
M80069D	AGE-RELATED OSTEOPOROSIS WITH CURRENT PATHOLOGICAL FRACTURE, UNSPECIFIED LOWER LEG SUBSEQUENT ENCOUNTER FOR FRACTURE WITH ROUTINE HEALING
M80069G	AGE-RELATED OSTEOPOROSIS WITH CURRENT PATHOLOGICAL FRACTURE, UNSPECIFIED LOWER LEG SUBSEQUENT ENCOUNTER FOR FRACTURE WITH DELAYED HEALING
M80069K	AGE-RELATED OSTEOPOROSIS WITH CURRENT PATHOLOGICAL FRACTURE, UNSPECIFIED LOWER LEG SUBSEQUENT ENCOUNTER FOR FRACTURE WITH NONUNION
M80069P	AGE-RELATED OSTEOPOROSIS WITH CURRENT PATHOLOGICAL FRACTURE, UNSPECIFIED LOWER LEG SUBSEQUENT ENCOUNTER FOR FRACTURE WITH MALUNION
M80069S	AGE-RELATED OSTEOPOROSIS WITH CURRENT PATHOLOGICAL FRACTURE, UNSPECIFIED LOWER LEG SEQUELA
M80071A	AGE-RELATED OSTEOPOROSIS WITH CURRENT PATHOLOGICAL FRACTURE, RIGHT ANKLE AND FOOT INITIAL ENCOUNTER FOR FRACTURE
M80071D	AGE-RELATED OSTEOPOROSIS WITH CURRENT PATHOLOGICAL FRACTURE, RIGHT ANKLE AND FOOT SUBSEQUENT ENCOUNTER FOR FRACTURE WITH ROUTINE HEALING
M80071G	AGE-RELATED OSTEOPOROSIS WITH CURRENT PATHOLOGICAL FRACTURE, RIGHT ANKLE AND FOOT SUBSEQUENT ENCOUNTER FOR FRACTURE WITH DELAYED HEALING
M80071K	AGE-RELATED OSTEOPOROSIS WITH CURRENT PATHOLOGICAL FRACTURE, RIGHT ANKLE AND FOOT SUBSEQUENT ENCOUNTER FOR FRACTURE WITH NONUNION

<b>Table 4 (diagnosis of osteoporosis)</b> <b>Required diagnosis: 1</b> <b>Look back timeframe: 365 days</b>	
<b>ICD-10 Code</b>	<b>Description</b>
M80071P	AGE-RELATED OSTEOPOROSIS WITH CURRENT PATHOLOGICAL FRACTURE, RIGHT ANKLE AND FOOT SUBSEQUENT ENCOUNTER FOR FRACTURE WITH MALUNION
M80071S	AGE-RELATED OSTEOPOROSIS WITH CURRENT PATHOLOGICAL FRACTURE, RIGHT ANKLE AND FOOT SEQUELA
M80072A	AGE-RELATED OSTEOPOROSIS WITH CURRENT PATHOLOGICAL FRACTURE, LEFT ANKLE AND FOOT INITIAL ENCOUNTER FOR FRACTURE
M80072D	AGE-RELATED OSTEOPOROSIS WITH CURRENT PATHOLOGICAL FRACTURE, LEFT ANKLE AND FOOT SUBSEQUENT ENCOUNTER FOR FRACTURE WITH ROUTINE HEALING
M80072G	AGE-RELATED OSTEOPOROSIS WITH CURRENT PATHOLOGICAL FRACTURE, LEFT ANKLE AND FOOT SUBSEQUENT ENCOUNTER FOR FRACTURE WITH DELAYED HEALING
M80072K	AGE-RELATED OSTEOPOROSIS WITH CURRENT PATHOLOGICAL FRACTURE, LEFT ANKLE AND FOOT SUBSEQUENT ENCOUNTER FOR FRACTURE WITH NONUNION
M80072P	AGE-RELATED OSTEOPOROSIS WITH CURRENT PATHOLOGICAL FRACTURE, LEFT ANKLE AND FOOT SUBSEQUENT ENCOUNTER FOR FRACTURE WITH MALUNION
M80072S	AGE-RELATED OSTEOPOROSIS WITH CURRENT PATHOLOGICAL FRACTURE, LEFT ANKLE AND FOOT SEQUELA
M80079A	AGE-RELATED OSTEOPOROSIS WITH CURRENT PATHOLOGICAL FRACTURE, UNSPECIFIED ANKLE AND FOOT INITIAL ENCOUNTER FOR FRACTURE
M80079D	AGE-RELATED OSTEOPOROSIS WITH CURRENT PATHOLOGICAL FRACTURE, UNSPECIFIED ANKLE AND FOOT SUBSEQUENT ENCOUNTER FOR FRACTURE WITH ROUTINE HEALING
M80079G	AGE-RELATED OSTEOPOROSIS WITH CURRENT PATHOLOGICAL FRACTURE, UNSPECIFIED ANKLE AND FOOT SUBSEQUENT ENCOUNTER FOR FRACTURE WITH DELAYED HEALING
M80079K	AGE-RELATED OSTEOPOROSIS WITH CURRENT PATHOLOGICAL FRACTURE, UNSPECIFIED ANKLE AND FOOT SUBSEQUENT ENCOUNTER FOR FRACTURE WITH NONUNION

<b>Table 4 (diagnosis of osteoporosis)</b> <b>Required diagnosis: 1</b> <b>Look back timeframe: 365 days</b>	
<b>ICD-10 Code</b>	<b>Description</b>
M80079P	AGE-RELATED OSTEOPOROSIS WITH CURRENT PATHOLOGICAL FRACTURE, UNSPECIFIED ANKLE AND FOOT SUBSEQUENT ENCOUNTER FOR FRACTURE WITH MALUNION
M80079S	AGE-RELATED OSTEOPOROSIS WITH CURRENT PATHOLOGICAL FRACTURE, UNSPECIFIED ANKLE AND FOOT SEQUELA
M8008XA	OTHER OSTEOPOROSIS WITH CURRENT PATHOLOGICAL FRACTURE, UNSPECIFIED SITE INITIAL ENCOUNTER FOR FRACTURE
M8008XD	OTHER OSTEOPOROSIS WITH CURRENT PATHOLOGICAL FRACTURE, UNSPECIFIED SITE SUBSEQUENT ENCOUNTER FOR FRACTURE WITH ROUTINE HEALING
M8008XG	OTHER OSTEOPOROSIS WITH CURRENT PATHOLOGICAL FRACTURE, UNSPECIFIED SITE SUBSEQUENT ENCOUNTER FOR FRACTURE WITH DELAYED HEALING
M8008XK	OTHER OSTEOPOROSIS WITH CURRENT PATHOLOGICAL FRACTURE, UNSPECIFIED SITE SUBSEQUENT ENCOUNTER FOR FRACTURE WITH NONUNION
M8008XP	OTHER OSTEOPOROSIS WITH CURRENT PATHOLOGICAL FRACTURE, UNSPECIFIED SITE SUBSEQUENT ENCOUNTER FOR FRACTURE WITH MALUNION
M8008XS	OTHER OSTEOPOROSIS WITH CURRENT PATHOLOGICAL FRACTURE, UNSPECIFIED SITE SEQUELA
M80811A	OTHER OSTEOPOROSIS WITH CURRENT PATHOLOGICAL FRACTURE, RIGHT SHOULDER INITIAL ENCOUNTER FOR FRACTURE
M80811D	OTHER OSTEOPOROSIS WITH CURRENT PATHOLOGICAL FRACTURE, RIGHT SHOULDER SUBSEQUENT ENCOUNTER FOR FRACTURE WITH ROUTINE HEALING
M80811G	OTHER OSTEOPOROSIS WITH CURRENT PATHOLOGICAL FRACTURE, RIGHT SHOULDER SUBSEQUENT ENCOUNTER FOR FRACTURE WITH DELAYED HEALING
M80811K	OTHER OSTEOPOROSIS WITH CURRENT PATHOLOGICAL FRACTURE, RIGHT SHOULDER SUBSEQUENT ENCOUNTER FOR FRACTURE WITH NONUNION
M80811P	OTHER OSTEOPOROSIS WITH CURRENT PATHOLOGICAL FRACTURE, RIGHT SHOULDER SUBSEQUENT ENCOUNTER FOR FRACTURE WITH MALUNION

<b>Table 4 (diagnosis of osteoporosis)</b> <b>Required diagnosis: 1</b> <b>Look back timeframe: 365 days</b>	
<b>ICD-10 Code</b>	<b>Description</b>
M80811S	OTHER OSTEOPOROSIS WITH CURRENT PATHOLOGICAL FRACTURE, RIGHT SHOULDER SEQUELA
M80812A	OTHER OSTEOPOROSIS WITH CURRENT PATHOLOGICAL FRACTURE, LEFT SHOULDER INITIAL ENCOUNTER FOR FRACTURE
M80812D	OTHER OSTEOPOROSIS WITH CURRENT PATHOLOGICAL FRACTURE, LEFT SHOULDER SUBSEQUENT ENCOUNTER FOR FRACTURE WITH ROUTINE HEALING
M80812G	OTHER OSTEOPOROSIS WITH CURRENT PATHOLOGICAL FRACTURE, LEFT SHOULDER SUBSEQUENT ENCOUNTER FOR FRACTURE WITH DELAYED HEALING
M80812K	OTHER OSTEOPOROSIS WITH CURRENT PATHOLOGICAL FRACTURE, LEFT SHOULDER SUBSEQUENT ENCOUNTER FOR FRACTURE WITH NONUNION
M80812P	OTHER OSTEOPOROSIS WITH CURRENT PATHOLOGICAL FRACTURE, LEFT SHOULDER SUBSEQUENT ENCOUNTER FOR FRACTURE WITH MALUNION
M80812S	OTHER OSTEOPOROSIS WITH CURRENT PATHOLOGICAL FRACTURE, LEFT SHOULDER SEQUELA
M80819A	OTHER OSTEOPOROSIS WITH CURRENT PATHOLOGICAL FRACTURE, UNSPECIFIED SHOULDER INITIAL ENCOUNTER FOR FRACTURE
M80819D	OTHER OSTEOPOROSIS WITH CURRENT PATHOLOGICAL FRACTURE, UNSPECIFIED SHOULDER SUBSEQUENT ENCOUNTER FOR FRACTURE WITH ROUTINE HEALING
M80819G	OTHER OSTEOPOROSIS WITH CURRENT PATHOLOGICAL FRACTURE, UNSPECIFIED SHOULDER SUBSEQUENT ENCOUNTER FOR FRACTURE WITH DELAYED HEALING
M80819K	OTHER OSTEOPOROSIS WITH CURRENT PATHOLOGICAL FRACTURE, UNSPECIFIED SHOULDER SUBSEQUENT ENCOUNTER FOR FRACTURE WITH NONUNION
M80819P	OTHER OSTEOPOROSIS WITH CURRENT PATHOLOGICAL FRACTURE, UNSPECIFIED SHOULDER SUBSEQUENT ENCOUNTER FOR FRACTURE WITH MALUNION
M80819S	OTHER OSTEOPOROSIS WITH CURRENT PATHOLOGICAL FRACTURE, UNSPECIFIED SHOULDER SEQUELA



<b>Table 4 (diagnosis of osteoporosis)</b> <b>Required diagnosis: 1</b> <b>Look back timeframe: 365 days</b>	
<b>ICD-10 Code</b>	<b>Description</b>
M80821A	OTHER OSTEOPOROSIS WITH CURRENT PATHOLOGICAL FRACTURE, RIGHT HUMERUS INITIAL ENCOUNTER FOR FRACTURE
M80821D	OTHER OSTEOPOROSIS WITH CURRENT PATHOLOGICAL FRACTURE, RIGHT HUMERUS SUBSEQUENT ENCOUNTER FOR FRACTURE WITH ROUTINE HEALING
M80821G	OTHER OSTEOPOROSIS WITH CURRENT PATHOLOGICAL FRACTURE, RIGHT HUMERUS SUBSEQUENT ENCOUNTER FOR FRACTURE WITH DELAYED HEALING
M80821K	OTHER OSTEOPOROSIS WITH CURRENT PATHOLOGICAL FRACTURE, RIGHT HUMERUS SUBSEQUENT ENCOUNTER FOR FRACTURE WITH NONUNION
M80821P	OTHER OSTEOPOROSIS WITH CURRENT PATHOLOGICAL FRACTURE, RIGHT HUMERUS SUBSEQUENT ENCOUNTER FOR FRACTURE WITH MALUNION
M80821S	OTHER OSTEOPOROSIS WITH CURRENT PATHOLOGICAL FRACTURE, RIGHT HUMERUS SEQUELA
M80822A	OTHER OSTEOPOROSIS WITH CURRENT PATHOLOGICAL FRACTURE, LEFT HUMERUS INITIAL ENCOUNTER FOR FRACTURE
M80822D	OTHER OSTEOPOROSIS WITH CURRENT PATHOLOGICAL FRACTURE, LEFT HUMERUS SUBSEQUENT ENCOUNTER FOR FRACTURE WITH ROUTINE HEALING
M80822G	OTHER OSTEOPOROSIS WITH CURRENT PATHOLOGICAL FRACTURE, LEFT HUMERUS SUBSEQUENT ENCOUNTER FOR FRACTURE WITH DELAYED HEALING
M80822K	OTHER OSTEOPOROSIS WITH CURRENT PATHOLOGICAL FRACTURE, LEFT HUMERUS SUBSEQUENT ENCOUNTER FOR FRACTURE WITH NONUNION
M80822P	OTHER OSTEOPOROSIS WITH CURRENT PATHOLOGICAL FRACTURE, LEFT HUMERUS SUBSEQUENT ENCOUNTER FOR FRACTURE WITH MALUNION
M80822S	OTHER OSTEOPOROSIS WITH CURRENT PATHOLOGICAL FRACTURE, LEFT HUMERUS SEQUELA
M80829A	OTHER OSTEOPOROSIS WITH CURRENT PATHOLOGICAL FRACTURE, UNSPECIFIED HUMERUS INITIAL ENCOUNTER FOR FRACTURE
M80829D	OTHER OSTEOPOROSIS WITH CURRENT PATHOLOGICAL FRACTURE, UNSPECIFIED HUMERUS SUBSEQUENT ENCOUNTER FOR FRACTURE WITH ROUTINE HEALING

<b>Table 4 (diagnosis of osteoporosis)</b> <b>Required diagnosis: 1</b> <b>Look back timeframe: 365 days</b>	
<b>ICD-10 Code</b>	<b>Description</b>
M80829G	OTHER OSTEOPOROSIS WITH CURRENT PATHOLOGICAL FRACTURE, UNSPECIFIED HUMERUS SUBSEQUENT ENCOUNTER FOR FRACTURE WITH DELAYED HEALING
M80829K	OTHER OSTEOPOROSIS WITH CURRENT PATHOLOGICAL FRACTURE, UNSPECIFIED HUMERUS SUBSEQUENT ENCOUNTER FOR FRACTURE WITH NONUNION
M80829P	OTHER OSTEOPOROSIS WITH CURRENT PATHOLOGICAL FRACTURE, UNSPECIFIED HUMERUS SUBSEQUENT ENCOUNTER FOR FRACTURE WITH MALUNION
M80829S	OTHER OSTEOPOROSIS WITH CURRENT PATHOLOGICAL FRACTURE, UNSPECIFIED HUMERUS SEQUELA
M80831A	OTHER OSTEOPOROSIS WITH CURRENT PATHOLOGICAL FRACTURE, RIGHT FOREARM INITIAL ENCOUNTER FOR FRACTURE
M80831D	OTHER OSTEOPOROSIS WITH CURRENT PATHOLOGICAL FRACTURE, RIGHT FOREARM SUBSEQUENT ENCOUNTER FOR FRACTURE WITH ROUTINE HEALING
M80831G	OTHER OSTEOPOROSIS WITH CURRENT PATHOLOGICAL FRACTURE, RIGHT FOREARM SUBSEQUENT ENCOUNTER FOR FRACTURE WITH DELAYED HEALING
M80831K	OTHER OSTEOPOROSIS WITH CURRENT PATHOLOGICAL FRACTURE, RIGHT FOREARM SUBSEQUENT ENCOUNTER FOR FRACTURE WITH NONUNION
M80831P	OTHER OSTEOPOROSIS WITH CURRENT PATHOLOGICAL FRACTURE, RIGHT FOREARM SUBSEQUENT ENCOUNTER FOR FRACTURE WITH MALUNION
M80831S	OTHER OSTEOPOROSIS WITH CURRENT PATHOLOGICAL FRACTURE, RIGHT FOREARM SEQUELA
M80832A	OTHER OSTEOPOROSIS WITH CURRENT PATHOLOGICAL FRACTURE, LEFT FOREARM INITIAL ENCOUNTER FOR FRACTURE
M80832D	OTHER OSTEOPOROSIS WITH CURRENT PATHOLOGICAL FRACTURE, LEFT FOREARM SUBSEQUENT ENCOUNTER FOR FRACTURE WITH ROUTINE HEALING
M80832G	OTHER OSTEOPOROSIS WITH CURRENT PATHOLOGICAL FRACTURE, LEFT FOREARM SUBSEQUENT ENCOUNTER FOR FRACTURE WITH DELAYED HEALING

<b>Table 4 (diagnosis of osteoporosis)</b> <b>Required diagnosis: 1</b> <b>Look back timeframe: 365 days</b>	
<b>ICD-10 Code</b>	<b>Description</b>
M80832K	OTHER OSTEOPOROSIS WITH CURRENT PATHOLOGICAL FRACTURE, LEFT FOREARM SUBSEQUENT ENCOUNTER FOR FRACTURE WITH NONUNION
M80832P	OTHER OSTEOPOROSIS WITH CURRENT PATHOLOGICAL FRACTURE, LEFT FOREARM SUBSEQUENT ENCOUNTER FOR FRACTURE WITH MALUNION
M80832S	OTHER OSTEOPOROSIS WITH CURRENT PATHOLOGICAL FRACTURE, LEFT FOREARM SEQUELA
M80839A	OTHER OSTEOPOROSIS WITH CURRENT PATHOLOGICAL FRACTURE, UNSPECIFIED FOREARM INITIAL ENCOUNTER FOR FRACTURE
M80839D	OTHER OSTEOPOROSIS WITH CURRENT PATHOLOGICAL FRACTURE, UNSPECIFIED FOREARM SUBSEQUENT ENCOUNTER FOR FRACTURE WITH ROUTINE HEALING
M80839G	OTHER OSTEOPOROSIS WITH CURRENT PATHOLOGICAL FRACTURE, UNSPECIFIED FOREARM SUBSEQUENT ENCOUNTER FOR FRACTURE WITH DELAYED HEALING
M80839K	OTHER OSTEOPOROSIS WITH CURRENT PATHOLOGICAL FRACTURE, UNSPECIFIED FOREARM SUBSEQUENT ENCOUNTER FOR FRACTURE WITH NONUNION
M80839P	OTHER OSTEOPOROSIS WITH CURRENT PATHOLOGICAL FRACTURE, UNSPECIFIED FOREARM SUBSEQUENT ENCOUNTER FOR FRACTURE WITH MALUNION
M80839S	OTHER OSTEOPOROSIS WITH CURRENT PATHOLOGICAL FRACTURE, UNSPECIFIED FOREARM SEQUELA
M80841A	OTHER OSTEOPOROSIS WITH CURRENT PATHOLOGICAL FRACTURE, RIGHT HAND INITIAL ENCOUNTER FOR FRACTURE
M80841D	OTHER OSTEOPOROSIS WITH CURRENT PATHOLOGICAL FRACTURE, RIGHT HAND SUBSEQUENT ENCOUNTER FOR FRACTURE WITH ROUTINE HEALING
M80841G	OTHER OSTEOPOROSIS WITH CURRENT PATHOLOGICAL FRACTURE, RIGHT HAND SUBSEQUENT ENCOUNTER FOR FRACTURE WITH DELAYED HEALING
M80841K	OTHER OSTEOPOROSIS WITH CURRENT PATHOLOGICAL FRACTURE, RIGHT HAND SUBSEQUENT ENCOUNTER FOR FRACTURE WITH NONUNION
M80841P	OTHER OSTEOPOROSIS WITH CURRENT PATHOLOGICAL FRACTURE, RIGHT HAND SUBSEQUENT ENCOUNTER FOR FRACTURE WITH MALUNION

<b>Table 4 (diagnosis of osteoporosis)</b> <b>Required diagnosis: 1</b> <b>Look back timeframe: 365 days</b>	
<b>ICD-10 Code</b>	<b>Description</b>
M80841S	OTHER OSTEOPOROSIS WITH CURRENT PATHOLOGICAL FRACTURE, RIGHT HAND SEQUELA
M80842A	OTHER OSTEOPOROSIS WITH CURRENT PATHOLOGICAL FRACTURE, LEFT HAND INITIAL ENCOUNTER FOR FRACTURE
M80842D	OTHER OSTEOPOROSIS WITH CURRENT PATHOLOGICAL FRACTURE, LEFT HAND SUBSEQUENT ENCOUNTER FOR FRACTURE WITH ROUTINE HEALING
M80842G	OTHER OSTEOPOROSIS WITH CURRENT PATHOLOGICAL FRACTURE, LEFT HAND SUBSEQUENT ENCOUNTER FOR FRACTURE WITH DELAYED HEALING
M80842K	OTHER OSTEOPOROSIS WITH CURRENT PATHOLOGICAL FRACTURE, LEFT HAND SUBSEQUENT ENCOUNTER FOR FRACTURE WITH NONUNION
M80842P	OTHER OSTEOPOROSIS WITH CURRENT PATHOLOGICAL FRACTURE, LEFT HAND SUBSEQUENT ENCOUNTER FOR FRACTURE WITH MALUNION
M80842S	OTHER OSTEOPOROSIS WITH CURRENT PATHOLOGICAL FRACTURE, LEFT HAND SEQUELA
M80849A	OTHER OSTEOPOROSIS WITH CURRENT PATHOLOGICAL FRACTURE, UNSPECIFIED HAND INITIAL ENCOUNTER FOR FRACTURE
M80849D	OTHER OSTEOPOROSIS WITH CURRENT PATHOLOGICAL FRACTURE, UNSPECIFIED HAND SUBSEQUENT ENCOUNTER FOR FRACTURE WITH ROUTINE HEALING
M80849G	OTHER OSTEOPOROSIS WITH CURRENT PATHOLOGICAL FRACTURE, UNSPECIFIED HAND SUBSEQUENT ENCOUNTER FOR FRACTURE WITH DELAYED HEALING
M80849K	OTHER OSTEOPOROSIS WITH CURRENT PATHOLOGICAL FRACTURE, UNSPECIFIED HAND SUBSEQUENT ENCOUNTER FOR FRACTURE WITH NONUNION
M80849P	OTHER OSTEOPOROSIS WITH CURRENT PATHOLOGICAL FRACTURE, UNSPECIFIED HAND SUBSEQUENT ENCOUNTER FOR FRACTURE WITH MALUNION
M80849S	OTHER OSTEOPOROSIS WITH CURRENT PATHOLOGICAL FRACTURE, UNSPECIFIED HAND SEQUELA
M80851A	OTHER OSTEOPOROSIS WITH CURRENT PATHOLOGICAL FRACTURE, RIGHT FEMUR INITIAL ENCOUNTER FOR FRACTURE

<b>Table 4 (diagnosis of osteoporosis)</b> <b>Required diagnosis: 1</b> <b>Look back timeframe: 365 days</b>	
<b>ICD-10 Code</b>	<b>Description</b>
M80851D	OTHER OSTEOPOROSIS WITH CURRENT PATHOLOGICAL FRACTURE, RIGHT FEMUR SUBSEQUENT ENCOUNTER FOR FRACTURE WITH ROUTINE HEALING
M80851G	OTHER OSTEOPOROSIS WITH CURRENT PATHOLOGICAL FRACTURE, RIGHT FEMUR SUBSEQUENT ENCOUNTER FOR FRACTURE WITH DELAYED HEALING
M80851K	OTHER OSTEOPOROSIS WITH CURRENT PATHOLOGICAL FRACTURE, RIGHT FEMUR SUBSEQUENT ENCOUNTER FOR FRACTURE WITH NONUNION
M80851P	OTHER OSTEOPOROSIS WITH CURRENT PATHOLOGICAL FRACTURE, RIGHT FEMUR SUBSEQUENT ENCOUNTER FOR FRACTURE WITH MALUNION
M80851S	OTHER OSTEOPOROSIS WITH CURRENT PATHOLOGICAL FRACTURE, RIGHT FEMUR SEQUELA
M80852A	OTHER OSTEOPOROSIS WITH CURRENT PATHOLOGICAL FRACTURE, LEFT FEMUR INITIAL ENCOUNTER FOR FRACTURE
M80852D	OTHER OSTEOPOROSIS WITH CURRENT PATHOLOGICAL FRACTURE, LEFT FEMUR SUBSEQUENT ENCOUNTER FOR FRACTURE WITH ROUTINE HEALING
M80852G	OTHER OSTEOPOROSIS WITH CURRENT PATHOLOGICAL FRACTURE, LEFT FEMUR SUBSEQUENT ENCOUNTER FOR FRACTURE WITH DELAYED HEALING
M80852K	OTHER OSTEOPOROSIS WITH CURRENT PATHOLOGICAL FRACTURE, LEFT FEMUR SUBSEQUENT ENCOUNTER FOR FRACTURE WITH NONUNION
M80852P	OTHER OSTEOPOROSIS WITH CURRENT PATHOLOGICAL FRACTURE, LEFT FEMUR SUBSEQUENT ENCOUNTER FOR FRACTURE WITH MALUNION
M80852S	OTHER OSTEOPOROSIS WITH CURRENT PATHOLOGICAL FRACTURE, LEFT FEMUR SEQUELA
M80859A	OTHER OSTEOPOROSIS WITH CURRENT PATHOLOGICAL FRACTURE, UNSPECIFIED FEMUR INITIAL ENCOUNTER FOR FRACTURE
M80859D	OTHER OSTEOPOROSIS WITH CURRENT PATHOLOGICAL FRACTURE, UNSPECIFIED FEMUR SUBSEQUENT ENCOUNTER FOR FRACTURE WITH ROUTINE HEALING

<b>Table 4 (diagnosis of osteoporosis)</b> <b>Required diagnosis: 1</b> <b>Look back timeframe: 365 days</b>	
<b>ICD-10 Code</b>	<b>Description</b>
M80859G	OTHER OSTEOPOROSIS WITH CURRENT PATHOLOGICAL FRACTURE, UNSPECIFIED FEMUR SUBSEQUENT ENCOUNTER FOR FRACTURE WITH DELAYED HEALING
M80859K	OTHER OSTEOPOROSIS WITH CURRENT PATHOLOGICAL FRACTURE, UNSPECIFIED FEMUR SUBSEQUENT ENCOUNTER FOR FRACTURE WITH NONUNION
M80859P	OTHER OSTEOPOROSIS WITH CURRENT PATHOLOGICAL FRACTURE, UNSPECIFIED FEMUR SUBSEQUENT ENCOUNTER FOR FRACTURE WITH MALUNION
M80859S	OTHER OSTEOPOROSIS WITH CURRENT PATHOLOGICAL FRACTURE, UNSPECIFIED FEMUR SEQUELA
M80861A	OTHER OSTEOPOROSIS WITH CURRENT PATHOLOGICAL FRACTURE, RIGHT LOWER LEG INITIAL ENCOUNTER FOR FRACTURE
M80861D	OTHER OSTEOPOROSIS WITH CURRENT PATHOLOGICAL FRACTURE, RIGHT LOWER LEG SUBSEQUENT ENCOUNTER FOR FRACTURE WITH ROUTINE HEALING
M80861G	OTHER OSTEOPOROSIS WITH CURRENT PATHOLOGICAL FRACTURE, RIGHT LOWER LEG SUBSEQUENT ENCOUNTER FOR FRACTURE WITH DELAYED HEALING
M80861K	OTHER OSTEOPOROSIS WITH CURRENT PATHOLOGICAL FRACTURE, RIGHT LOWER LEG SUBSEQUENT ENCOUNTER FOR FRACTURE WITH NONUNION
M80861P	OTHER OSTEOPOROSIS WITH CURRENT PATHOLOGICAL FRACTURE, RIGHT LOWER LEG SUBSEQUENT ENCOUNTER FOR FRACTURE WITH MALUNION
M80861S	OTHER OSTEOPOROSIS WITH CURRENT PATHOLOGICAL FRACTURE, RIGHT LOWER LEG SEQUELA
M80862A	OTHER OSTEOPOROSIS WITH CURRENT PATHOLOGICAL FRACTURE, LEFT LOWER LEG INITIAL ENCOUNTER FOR FRACTURE
M80862D	OTHER OSTEOPOROSIS WITH CURRENT PATHOLOGICAL FRACTURE, LEFT LOWER LEG SUBSEQUENT ENCOUNTER FOR FRACTURE WITH ROUTINE HEALING
M80862G	OTHER OSTEOPOROSIS WITH CURRENT PATHOLOGICAL FRACTURE, LEFT LOWER LEG SUBSEQUENT ENCOUNTER FOR FRACTURE WITH DELAYED HEALING

<b>Table 4 (diagnosis of osteoporosis)</b> <b>Required diagnosis: 1</b> <b>Look back timeframe: 365 days</b>	
<b>ICD-10 Code</b>	<b>Description</b>
M80862K	OTHER OSTEOPOROSIS WITH CURRENT PATHOLOGICAL FRACTURE, LEFT LOWER LEG SUBSEQUENT ENCOUNTER FOR FRACTURE WITH NONUNION
M80862P	OTHER OSTEOPOROSIS WITH CURRENT PATHOLOGICAL FRACTURE, LEFT LOWER LEG SUBSEQUENT ENCOUNTER FOR FRACTURE WITH MALUNION
M80862S	OTHER OSTEOPOROSIS WITH CURRENT PATHOLOGICAL FRACTURE, LEFT LOWER LEG SEQUELA
M80869A	OTHER OSTEOPOROSIS WITH CURRENT PATHOLOGICAL FRACTURE, UNSPECIFIED LOWER LEG INITIAL ENCOUNTER FOR FRACTURE
M80869D	OTHER OSTEOPOROSIS WITH CURRENT PATHOLOGICAL FRACTURE, UNSPECIFIED LOWER LEG SUBSEQUENT ENCOUNTER FOR FRACTURE WITH ROUTINE HEALING
M80869G	OTHER OSTEOPOROSIS WITH CURRENT PATHOLOGICAL FRACTURE, UNSPECIFIED LOWER LEG SUBSEQUENT ENCOUNTER FOR FRACTURE WITH DELAYED HEALING
M80869K	OTHER OSTEOPOROSIS WITH CURRENT PATHOLOGICAL FRACTURE, UNSPECIFIED LOWER LEG SUBSEQUENT ENCOUNTER FOR FRACTURE WITH NONUNION
M80869P	OTHER OSTEOPOROSIS WITH CURRENT PATHOLOGICAL FRACTURE, UNSPECIFIED LOWER LEG SUBSEQUENT ENCOUNTER FOR FRACTURE WITH MALUNION
M80869S	OTHER OSTEOPOROSIS WITH CURRENT PATHOLOGICAL FRACTURE, UNSPECIFIED LOWER LEG SEQUELA
M80871A	OTHER OSTEOPOROSIS WITH CURRENT PATHOLOGICAL FRACTURE, RIGHT ANKLE AND FOOT INITIAL ENCOUNTER FOR FRACTURE
M80871D	OTHER OSTEOPOROSIS WITH CURRENT PATHOLOGICAL FRACTURE, RIGHT ANKLE AND FOOT SUBSEQUENT ENCOUNTER FOR FRACTURE WITH ROUTINE HEALING
M80871G	OTHER OSTEOPOROSIS WITH CURRENT PATHOLOGICAL FRACTURE, RIGHT ANKLE AND FOOT SUBSEQUENT ENCOUNTER FOR FRACTURE WITH DELAYED HEALING
M80871K	OTHER OSTEOPOROSIS WITH CURRENT PATHOLOGICAL FRACTURE, RIGHT ANKLE AND FOOT SUBSEQUENT ENCOUNTER FOR FRACTURE WITH NONUNION

<b>Table 4 (diagnosis of osteoporosis)</b> <b>Required diagnosis: 1</b> <b>Look back timeframe: 365 days</b>	
<b>ICD-10 Code</b>	<b>Description</b>
M80871P	OTHER OSTEOPOROSIS WITH CURRENT PATHOLOGICAL FRACTURE, RIGHT ANKLE AND FOOT SUBSEQUENT ENCOUNTER FOR FRACTURE WITH MALUNION
M80871S	OTHER OSTEOPOROSIS WITH CURRENT PATHOLOGICAL FRACTURE, RIGHT ANKLE AND FOOT SEQUELA
M80872A	OTHER OSTEOPOROSIS WITH CURRENT PATHOLOGICAL FRACTURE, LEFT ANKLE AND FOOT INITIAL ENCOUNTER FOR FRACTURE
M80872D	OTHER OSTEOPOROSIS WITH CURRENT PATHOLOGICAL FRACTURE, LEFT ANKLE AND FOOT SUBSEQUENT ENCOUNTER FOR FRACTURE WITH ROUTINE HEALING
M80872G	OTHER OSTEOPOROSIS WITH CURRENT PATHOLOGICAL FRACTURE, LEFT ANKLE AND FOOT SUBSEQUENT ENCOUNTER FOR FRACTURE WITH DELAYED HEALING
M80872K	OTHER OSTEOPOROSIS WITH CURRENT PATHOLOGICAL FRACTURE, LEFT ANKLE AND FOOT SUBSEQUENT ENCOUNTER FOR FRACTURE WITH NONUNION
M80872P	OTHER OSTEOPOROSIS WITH CURRENT PATHOLOGICAL FRACTURE, LEFT ANKLE AND FOOT SUBSEQUENT ENCOUNTER FOR FRACTURE WITH MALUNION
M80872S	OTHER OSTEOPOROSIS WITH CURRENT PATHOLOGICAL FRACTURE, LEFT ANKLE AND FOOT SEQUELA
M80879A	OTHER OSTEOPOROSIS WITH CURRENT PATHOLOGICAL FRACTURE, UNSPECIFIED ANKLE AND FOOT INITIAL ENCOUNTER FOR FRACTURE
M80879D	OTHER OSTEOPOROSIS WITH CURRENT PATHOLOGICAL FRACTURE, UNSPECIFIED ANKLE AND FOOT SUBSEQUENT ENCOUNTER FOR FRACTURE WITH ROUTINE HEALING
M80879G	OTHER OSTEOPOROSIS WITH CURRENT PATHOLOGICAL FRACTURE, UNSPECIFIED ANKLE AND FOOT SUBSEQUENT ENCOUNTER FOR FRACTURE WITH DELAYED HEALING
M80879K	OTHER OSTEOPOROSIS WITH CURRENT PATHOLOGICAL FRACTURE, UNSPECIFIED ANKLE AND FOOT SUBSEQUENT ENCOUNTER FOR FRACTURE WITH NONUNION



<b>Table 4 (diagnosis of osteoporosis)</b> <b>Required diagnosis: 1</b> <b>Look back timeframe: 365 days</b>	
<b>ICD-10 Code</b>	<b>Description</b>
M80879P	OTHER OSTEOPOROSIS WITH CURRENT PATHOLOGICAL FRACTURE, UNSPECIFIED ANKLE AND FOOT SUBSEQUENT ENCOUNTER FOR FRACTURE WITH MALUNION
M80879S	OTHER OSTEOPOROSIS WITH CURRENT PATHOLOGICAL FRACTURE, UNSPECIFIED ANKLE AND FOOT SEQUELA
M8088XA	OTHER OSTEOPOROSIS WITH CURRENT PATHOLOGICAL FRACTURE, VERTEBRA(E) INITIAL ENCOUNTER FOR FRACTURE
M8088XD	OTHER OSTEOPOROSIS WITH CURRENT PATHOLOGICAL FRACTURE, VERTEBRA(E) SUBSEQUENT ENCOUNTER FOR FRACTURE WITH ROUTINE HEALING
M8088XG	OTHER OSTEOPOROSIS WITH CURRENT PATHOLOGICAL FRACTURE, VERTEBRA(E) SUBSEQUENT ENCOUNTER FOR FRACTURE WITH DELAYED HEALING
M8088XK	OTHER OSTEOPOROSIS WITH CURRENT PATHOLOGICAL FRACTURE, VERTEBRA(E) SUBSEQUENT ENCOUNTER FOR FRACTURE WITH NONUNION
M8088XP	OTHER OSTEOPOROSIS WITH CURRENT PATHOLOGICAL FRACTURE, VERTEBRA(E) SUBSEQUENT ENCOUNTER FOR FRACTURE WITH MALUNION
M8088XS	OTHER OSTEOPOROSIS WITH CURRENT PATHOLOGICAL FRACTURE, VERTEBRA(E) SEQUELA
M810	AGE-RELATED OSTEOPOROSIS WITHOUT CURRENT PATHOLOGICAL FRACTURE
M816	LOCALIZED OSTEOPOROSIS [LEQUESNE]
M818	OTHER OSTEOPOROSIS WITHOUT CURRENT PATHOLOGICAL FRACTURE

<b>Table 5 (history of a strong OATP-1B1 inhibitor)</b> <b>Required claims: 1</b> <b>Look back timeframe: 90 days</b>	
<b>GCN</b>	<b>Label Name</b>
13910	CYCLOSPORINE 100 MG CAPSULE
13917	CYCLOSPORINE 100 MG/ML

<b>Table 5 (history of a strong OATP-1B1 inhibitor)</b> <b>Required claims: 1</b> <b>Look back timeframe: 90 days</b>	
<b>GCN</b>	<b>Label Name</b>
13911	CYCLOSPORINE 25 MG CAPSULE
13919	CYCLOSPORINE MODIFIED 100 MG
13918	CYCLOSPORINE MODIFIED 25 MG
13916	CYCLOSPORINE MODIFIED 50 MG
25540	GEMFIBROZIL 600 MG TABLET
13919	GENGRAF 100 MG CAPSULE
13917	GENGRAF 100 MG/ML SOLN
13918	GENGRAF 25 MG CAPSULE
13916	GENGRAF 50 MG CAPSULE
25540	LOPID 600 MG TABLET
13919	NEORAL 100 MG CAPSULE
13917	NEORAL 100 MG/ML SOLN
13918	NEORAL 25 MG CAPSULE
13910	SANDIMMUNE 100 MG CAPSULE
08220	SANDIMMUNE 100 MG/ML SOLN
13911	SANDIMMUNE 25 MG CAPSULE

**Orilissa (Elagolix)****Clinical Criteria References**

1. 2025 ICD-10-CM Diagnosis Codes. 2025. Available at [www.icd10data.com](http://www.icd10data.com). Accessed on August 11, 2025.
2. Clinical Pharmacology [online database]. Tampa, FL: Elsevier/Gold Standard, Inc.; 2025. Available at [www.clinicalpharmacology.com](http://www.clinicalpharmacology.com). Accessed on August 11, 2025.
3. Micromedex [online database]. Available at [www.micromedexsolutions.com](http://www.micromedexsolutions.com). Accessed on July 29, 2025.
4. Orilissa Prescribing Information. North Chicago, IL. AbbVie Inc. June 2023.
5. Taylor HS, Du EC, Chwalisz K. Clinical evaluation of the oral gonadotropin-releasing hormone-antagonist elagolix for the management of endometriosis-associated pain. *Pain Manag* 2019; 9:497.
6. Hornstein MD, Gibbons WE. (2025). Endometriosis: Long-term treatment with gonadotropin-releasing hormone agonists. UpToDate.



## Orilissa (Elagolix)

## Publication History

The Publication History records the publication iterations and revisions to this document. Notes for the *most current revision* are also provided in the [Revision Notes](#) on the first page of this document.

Publication Date	Notes
01/25/2019	<ul style="list-style-type: none"> <li>Initial publication and presentation to the DUR Board</li> </ul>
03/29/2019	<ul style="list-style-type: none"> <li>Updated to include formulary statement (The listed GCNS may not be an indication of TX Medicaid Formulary coverage. To learn the current formulary coverage, visit <a href="http://TxVendorDrug.com/formulary/formulary-search">TxVendorDrug.com/formulary/formulary-search</a>.) on each 'Drug Requiring PA' table</li> </ul>
01/12/2022	<ul style="list-style-type: none"> <li>Annual review by staff</li> <li>Added GCNs for Camila (11520), Deblitane (11520), Errin (11520), Heather (11520), Incassia (11520) and Slynd (46373) to Table 3b</li> <li>Updated references</li> </ul>
02/16/2024	<ul style="list-style-type: none"> <li>Annual review by staff</li> <li>Updated oral contraceptive table:</li> <li>Added GCNs for Afirmelle-28 (11534), Aurovela (11481, 11480, 26629, 68102, 68101), Ayuna-28 (11530), Charlotte (34725), Cyred EQ (68811), Dolishale (98551), ethynodiol-eth estra (11490, 11491), Finzala (34725), Hailey (68102, 68101, 11480, 26629), Iclevia (20414), Jaimiess (27096), Jasmiel (26737), Jencycla (11520), levono-e estrad (27096), Lojaimiess (18167), Lo-zumandimine (26737), Lyleq (11520), Lyza (11520), Merzee (34576), Microgestin (26629), Nora-be (11520), norethindrone (11520), noreth-ee-fe (68105), noreth-ee-fe (34576), noreth-ee (11480), noreth-ee-fe (68101), Nylia (11474, 11477), Nymyo (11300), Sharobel (11520), Simliya (94868), Simpesse (27906), Tarina (26629, 26629), Taysofy (34576), Tri-Lo-Mili (18126), Tri-Mili (11301), Tri-Nymyo (11301), Tri-Vylibra (11301, 18126), Volnea (94868), and Vylibra (11300)</li> <li>Removed GCNs for Amethia Lo (18167), Bekyree 28 (94868), Caziant (13094), Cyclofem (11474, 11477, 13094), desogest-eth estra (68811), Emoquette (68811), Enskyce (68811), Estrostep (68105), Fayosim (34465), Femynor (11300), Generess (29719), Gianvi (26737), Introvale (20414), Kimidess (94868), Larissia (11534), levonor-eth estrad (11531), Lillow (11530), Melodetta (34725), Mibelas (34725), Mononessa (11300), Myzilra (11531), Necon (11477), Nikki (26737), noreth-estradiol (26629), norg-ee (18126), Oggestrel (11501), Orsythia (11534), Ortho Tri-Cyclen (11301, 18126), Ortho-Cyclen (11300), Ortho-Novum (11474, 11477), Pirmella (11474, 11477), Previfem (11300), Quasense (20414), Rajani (29095), Tri-Femynor (11301), Trinessa (18126, 11301), Tri-Previfem</li> </ul>

Publication Date	Notes
	<p>(11301), Vyfemla (11470), Wymzya (97167), Zara (13803), Zenchent (11470), and Zovia (11491)</p> <ul style="list-style-type: none"> <li>Updated references</li> </ul>
01/17/2025	<ul style="list-style-type: none"> <li>Annual review by staff</li> <li>Added GCNs for Joyeaux-28 (44336), Lojaimiess (18167), Turqoz-28 (11500), and Yaz (26737) to oral contraceptive table</li> <li>Updated references</li> </ul>
04/29/2025	<ul style="list-style-type: none"> <li>Added GCNs for diflunisal (16850) and Dolobid (16850, 16851, 57589) to the Supporting Tables section</li> </ul>
08/29/2025	<ul style="list-style-type: none"> <li>Annual review by staff</li> <li>Added GCNs for Anaprox (47130), Fenoprofen (35751, 35750), Indocin (35680, 35681, 35690), Ketoprofen (34422), Lodine (33870, 33871, 61765, 61762, 61767, 61766), Nalfon (35760, 35751, 35750), Naprosyn (35793, 61850), QC Ibuprofen (35743), and Treximet (42354) to the NSAID supporting table</li> <li>Added GCNs for Desogestrel (68811), Jaimiess (18167), Levora (45933), Loestrin (26629), Low-ogestrel-21 (45902), Merzee (34576), Necon (11474, 11461, 45898, 11477), Norethindrone (11280), Seasonique (27096), and Tri-Norinyl (45929) to the Oral Contraceptive supporting table</li> <li>Updated references</li> </ul>
09/15/2025	<ul style="list-style-type: none"> <li>Added GCN for ibuprofen (35740) to the supporting tables section</li> </ul>